



**Base Kit**

- 1 Side Rail
- 2 Cross Brace
- 3 Top
- 4 Leg Brace
- 5 Leg
- 6 Cornhole Board Hardware

**Included in Bundle**

- 7 Pocket-Hole Jig 520PRO
- 8 Versa-Grip™ Clamp - 24"
- 9 2" Classic Face Clamp
- 10 Material Thickness Gauge
- 11 #2 Driver Bit
- 12 Easy-Set Drill Bit and Stop Collar
- 13 2 1/2" Pocket-Hole Screws
- 14 1 1/4" Pocket-Hole Screws

**WOODWORKING KIT / CORNHOLE BOARDS**



**STEP 1:**

**Set Up Your Pocket-Hole Jig**  
Scan the QR to watch a video for this step



**A** Use Material Thickness Gauge / Hex Wrench to measure material thickness (3/4").

**B** Set jig material thickness to 3/4".

Note: You can use most Kreg Pocket-Hole Jigs for this project. Be sure to set up and use your jig according to the manufacturer's instructions, and follow this guide for proper hole placement.

**C** Set drill bit stop collar to 3/4" (loosen and tighten stop collar with Hex Wrench).

**WARNING:** Drilling, sawing, sanding or machining wood products can expose you to wood dust, a substance known to the State of California to cause cancer. Avoid inhaling wood dust or use a dust mask or other safeguards for personal protection. For more information go to [www.P65Warnings.ca.gov/wood](http://www.P65Warnings.ca.gov/wood).

**WARNING:** Improper assembly or excessive weight applied to the finished product could result in injury. Follow all instructions provided for assembly. Kreg is not responsible for injuries as a result of improper assembly or use.

**WARNING:** Always wear personal protective equipment certified as such, including safety glasses, hearing protection, and respiratory protection. When using a power tool, always follow the manufacturer's personal protection equipment requirements. Gloves are recommended for handling unfinished wood products.

**BEFORE YOU GET STARTED**

We want to make sure have you the guidance and resources you need to be successful with this project. Simply scan the QR code below for tips and tricks on setting up your jig, drilling pocket holes, and more.

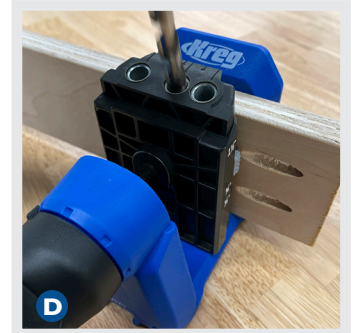
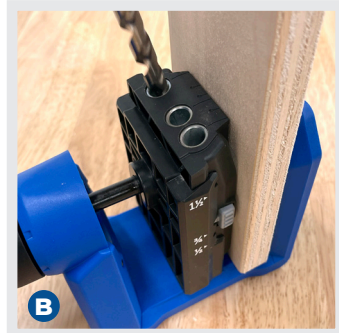




## STEP 2:

### Drill Pocket-Holes in Cross Braces (x8)

Scan the QR to watch a video for this step



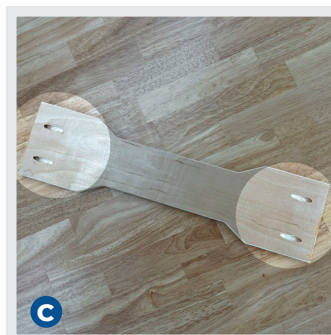
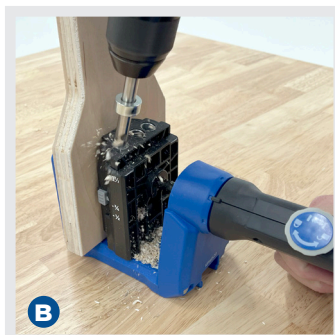
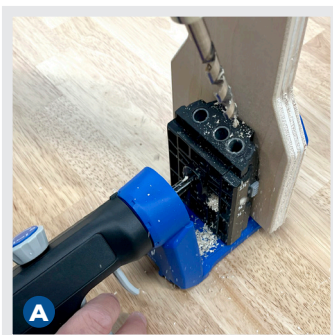
- A** Clamp Cross Brace so it is centered in the jig.
- B** Drill two pocket holes using the outside drill guides.
- C** Flip Cross Brace 180° in the jig and repeat steps A-B on the other end of the Cross Brace.
- D** Align outside edge of jig to inside edge of existing pocket holes, ensuring end stop and drill pocket hole. Repeat on the other end of the Cross Brace.
- E** Align jig so one drill guide hole is centered on Cross Brace and drill one pocket hole.
- F** Repeat steps A-E for remaining Cross Braces.



## STEP 3:

### Drill Pocket-Holes in Leg Braces (x2)

Scan the QR to watch a video for this step



- A** Clamp Leg Brace in jig so outside drill guides are approximately 1" from outside edges of board.
- B** Drill two pocket holes using the outside drill guides.
- C** Flip Leg Brace 180° in the jig.
- D** Repeat A-B on the other end of the Leg Brace.
- E** Repeat A-D for second Leg Brace.



## STEP 4:

### Assemble Frame

Scan the QR to watch a video for this step



**A** Optional: Workpiece edges and pocket holes can be sanded prior to assembly.

**B** Align edge of first Cross Brace with guide lines of both Side Rails. Important: Ensure all pocket holes are facing the correct direction, as indicated in photo B.

**C** Clamp side rails to first Cross Brace, checking to make sure alignment with guide line is consistent.

Important: Position pieces so that pocket-holes point in toward the center.

**D** Use #2 driver bit to drive 1 1/4" pocket-hole screws into Cross Brace.

Tip: Adjust drill clutch for driving screws. Do NOT use an impact driver, as this may lead to over-driven screws or stripped screw heads.

**E** Place second Cross Brace so it aligns with next guide line indicated on Side Rails.

**F** Use #2 driver bit to drive 1 1/4" pocket-hole screws into the Cross Brace.

**G** Place remaining Cross Braces so they align with remaining guide lines and attach with #2 driver bit and 1 1/4" pocket-hole screws.

**H** Ensure assembled frame matches photo H.

**I** Repeat A - H for second Frame Assembly.



## STEP 5:

### Attach Top to Frame (x2)

Scan the QR to watch a video for this step



**A** Place Frame Assembly on Top and position so that corners of Frame Assembly align with guide lines located at each corner of Top.

**B** Clamp the Top and Frame Assembly to the work surface.

**C** Use #2 driver bit to drive 1 1/4" pocket-hole screws into Cross Braces.

Tip: Adjust drill clutch for driving screws. Do NOT use an impact driver, as this may lead to over-driven screws or stripped screw heads.

**D** Attach the Cross Braces by driving 1 1/4" pocket-hole screws, starting with the pocket holes in one corner then moving to the opposite corner. After all four corners are attached, attach remaining Cross Braces with pocket-hole screws.

**E** Repeat A - D for second Top and Frame Assembly.



## STEP 6:

### Assemble and Attach Legs (x4)

Scan the QR to watch a video for this step



**A** Align edge of Leg Brace with guide line on Leg as shown in photo A.

**B** Use #2 driver bit to drive 1 1/4" pocket-hole screws into Leg Brace.

Tip: Adjust drill clutch for driving screws. Do NOT use an impact driver, as this may lead to over-driven screws or stripped screw heads.

**C** Repeat A - B for second Leg.

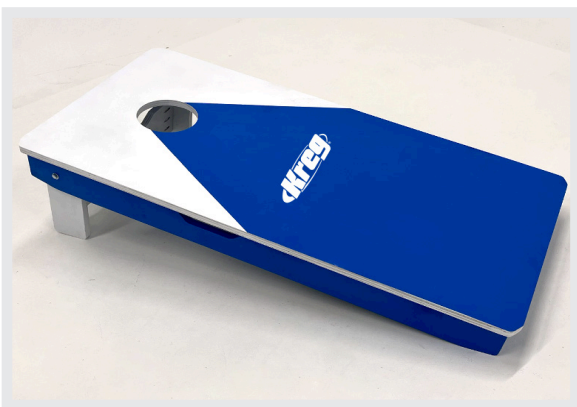
**D** Arrange included Bolt, Washers, and Nut as shown in photo D.

**E** Insert the rounded end of Leg Brace into Frame and line up the hole in the Frame with the hole in the Leg. Slide bolt through bolt hole and secure using the washers and nut.

Note: Place one washer between the bolt head and Side Rail, Side Rail and Leg, and the nut and Leg. Tighten nut using a pair of combination or adjustable wrenches.

Tip: Avoid under- or over-tightening the nut, so the Leg Assembly moves freely but stays in place when folded up.

**F** Repeat steps for second assembly.



## STEP 7:

### Customize it!

Scan the QR to watch a video for this step

**A** Once you're finished adding your own decorative touches, take a photo and post it with the #builtwithkreg hashtag to show your work and see what others are building with Kreg.

NOTE: For best results, seal top and edges of cornhole boards. The material used is a composite that can be vulnerable to water damage if not properly sealed. For tips on how to apply sealer to edges, please visit: <https://learn.kregtool.com/learn/make-painted-plywood-edges-look-great/>.

## LEARN MORE WOODWORKING TIPS



Scan here to discover helpful how-to articles and videos filled with woodworking tips and tricks.

## FIND INSPIRATION FOR YOUR NEXT PROJECT



Scan here to browse over 1,000 project plans and discover your next pocket-hole project.

## VISIT KREG ACADEMY



Scan here to visit our Foundations of Building course page and get access to a library of content designed specifically to help you build your woodworking skills.



## WE'RE HERE TO HELP

We want you to have an exceptional project building experience. If you have questions or need support, please get in touch.  
1-800-447-8638 | [technicalsupport@kregtool.com](mailto:technicalsupport@kregtool.com)