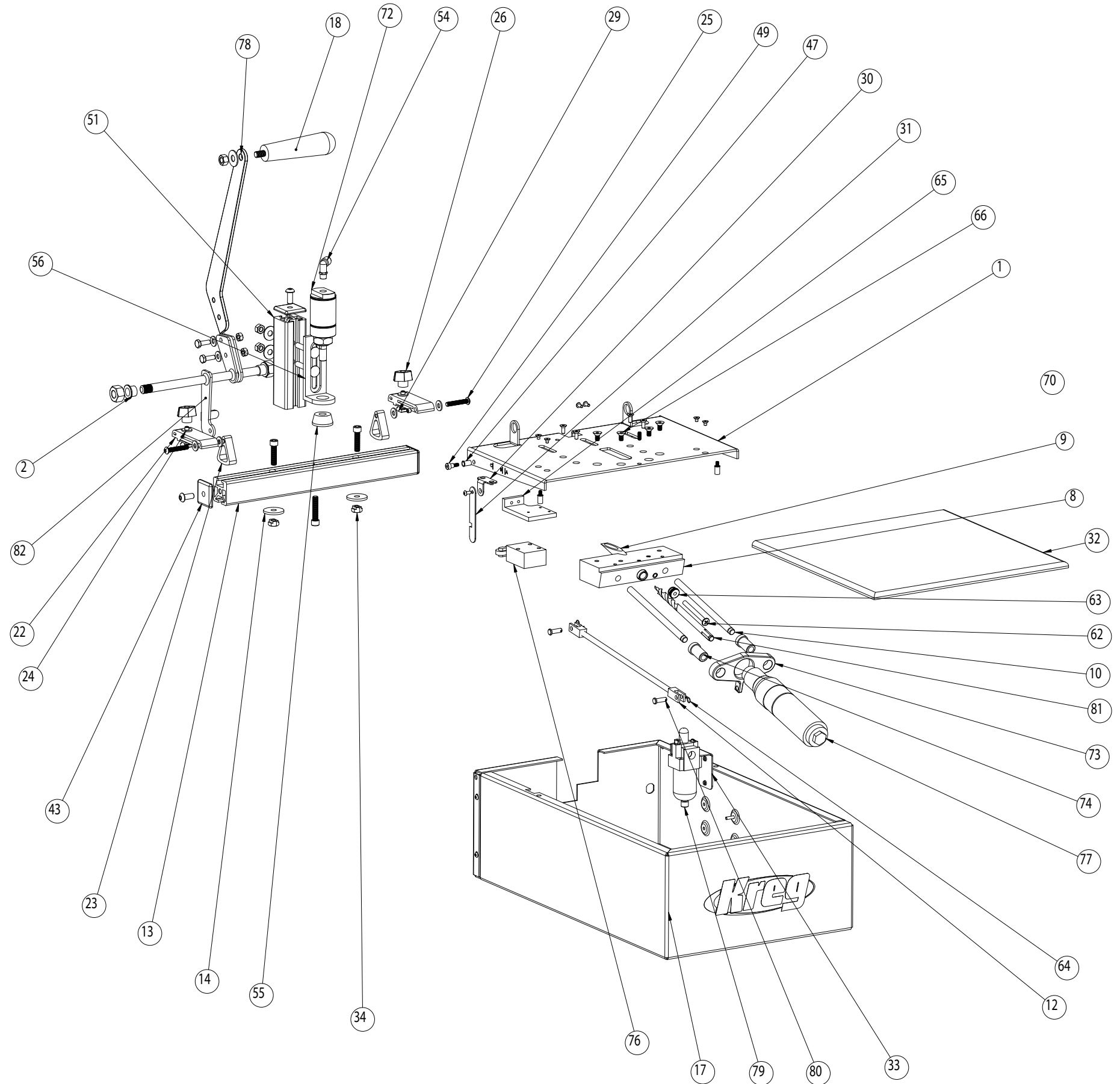




Foreman Pocket Hole Machine

Model # DB55 - Pneumatic

CALL OUT #	PART NUMBER	DESCRIPTION	QTY.
1	DB5215	DB55/110 Tool Plate	1
2	DB5035	Oilite Bearing	2
8	DB5001	Mounting Block for DB50	1
9	DB5258	Drill Guide Bushing	1
10	DB5261	New 3/8" Guide Rod	2
12	DB5054	Rod Clevis	2
13	DB5251	EZ DB Fence	1
14	DK1301	Fence Riser for DK/DB	2
17	DB5207	Cabinet (Right and Left)	2
18	DB5055	Handle	1
22	DK1311	Black Adj. Stop Block Arm	2
23	DK1312	Black Pendulum For Swing Stop	2
24	DK1504	1/4 Flat Brass Washer	8
25	DK1544	1/4-20 x 1-1/2 BSHCS	2
26	DK1313	Knob For Swing Stops	2
29	DK1515	1/4-20 T-Nuts	2
30	DB5218	Latch Bracket	1
31	DB5216	Latch	1
32	DB5094	Black Acrylic Top	1
33	DB5101	DB 55 Oiler Bracket	1
34	DB3456	Heavy Hex Nut Stepped	2
43	DK1314	End Cap for DK Table Fence	3
47	DB5043	#10-24 nut zerk	4
49	DB5042	1/4 x 1/4 Shoulder Screw	2
51	DB5231	Hold Down Tower	1
54	DK1605	Elbow Air Fitting	1
55	DB5244	DB 55 A-Pad	1
56	DB5007	Cylinder Mount for Db50	1
62	DB5253	1/4-20 x 2-1/2 Phil. Pan HD Bolt	1
63	FT4126	1/4-20 Brass Thumb Nut	1
64	DB5256	.042 x 1" Hair Pin	2
65	DB5013	DB 55 Air Valve Mount	1
66	DB5040	1/4-20 x 1/2 FHSCS	4
72	DB5052	Air Cylinder for DB50, w/logo	1
73	DB5004	Motor Mount for DB50	1
74	DB5012	Linear Bearings for DB50	2
76	DB5028	3 way switch	1
77	DB5053	Air Motor for DB50 (3/4 HP)	1
78	DB5022	Hand Lever for DB50	1
79	DB5102	DB 50 Oiler	1
80	DB5255	1/4 x 3/4 Clevis Pin	2
81	DK1209	Raw DK Series Step Drill Bit	1
82	DB5209	Operator Assembly	1

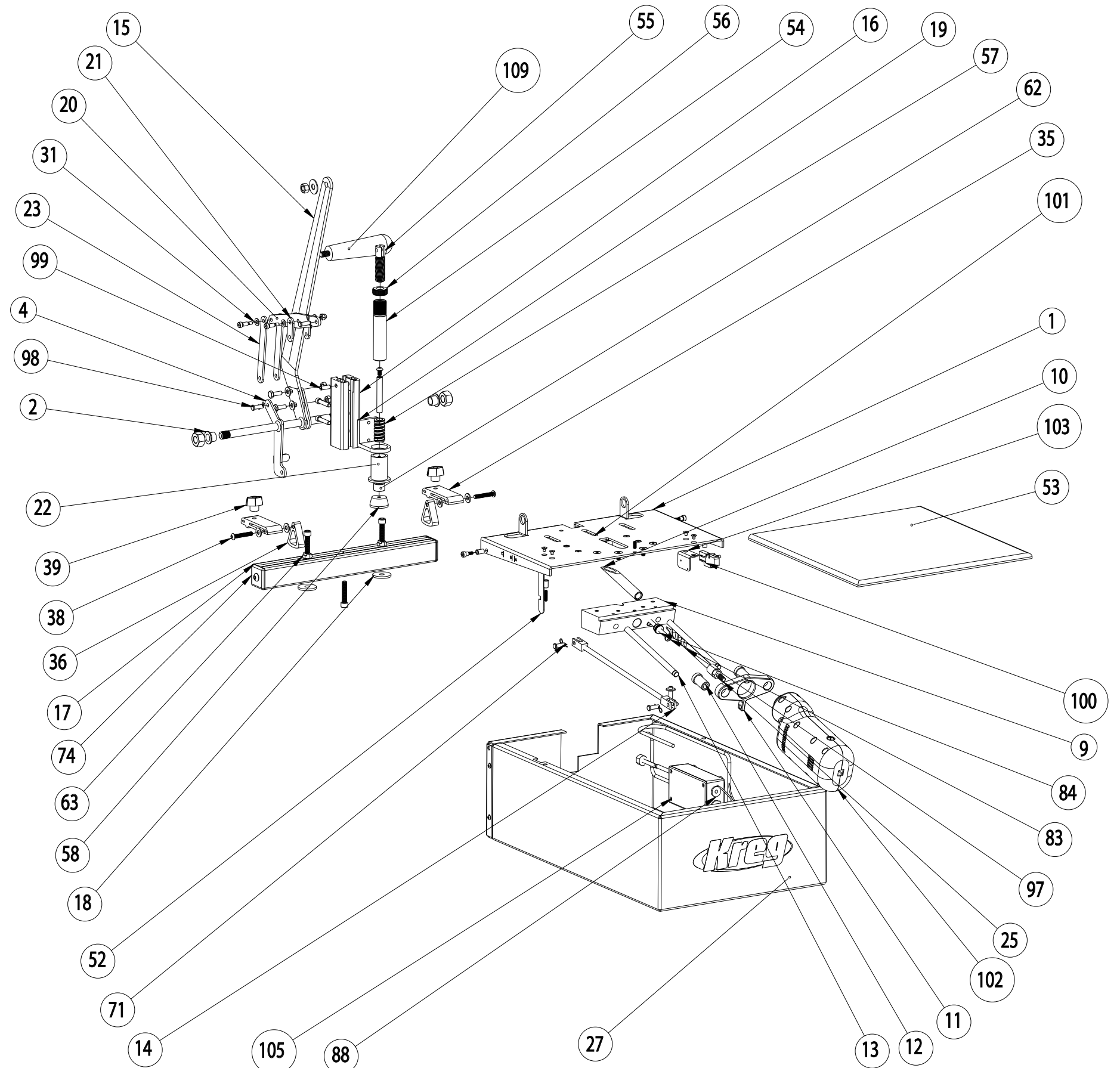




Foreman Pocket Hole Machine

Model # DB110 - Electric

CALL OUT #	PART NUMBER	PART DESCRIPTION	QTY.
1	DB5215	Tool plate	1
2	DB5035	Oilite Bearing	2
4	DB5209	Operator Assembly	1
9	DB5001	Mounting Block	1
10	DB5258	Guide Bushing	1
11	DB5232	Motor Mount	1
12	DB5012	Linear Bushing	2
13	DB5261	New 3/8" Guide Rod	2
14	DB5054	Rod Clevis	2
15	DB5208	DB 110 Arm	2
16	DB5231	Hold Down Tower	1
17	DB5251	EZ DB Fence	1
18	DK1301	Fence Riser for DK / DB	1
19	DB5241	Hold Down Bushing Bracket	2
20	DB5211	DB110 Upper link	1
21	DB5212	DB110 Pivot Plate	1
22	DB5224	Main Hold Down Bearing	2
23	DB5210	DB110 Transfer bar	1
25	DK 3109	Drill Adapter M8 x 1.25 RH Thr	2
27	DB5207	Cabinet (Right and Left)	2
31	DK1504	1/4" Flat Brass Washer	12
35	DK1311	Black Adj. Stop Block Arm	2
36	DK1312	Black Pendulum For Swing Stop	2
38	DK1544	1/4-20 x 1-1/2 BSHCS	2
39	DK1313	Knob For Swing Stops	2
42	DK1515	1/4-20 T-Nuts	2
51	DB5218	Latch Bracket	1
52	DB5216	Latch	1
53	DB5094	3/8 Black Acrylic Top	1
54	DB5230	Adjustment Shaft	1
55	DB5228	5/8 x 2-1/2 Hold Down Bolt	1
56	DB5229	5/8" Brass Lock Nut	1
57	DB5225	3/4 x 1.5 Hold Down Spring	1
58	DB5244	A-Pad for DB110	1
62	DB5242	3/4 x 1/2 Spacer	1
63	DB5226	5/16 - 18 Custom Hex Nut	2
71	DB5256	.042 x 1" Hair Pin	4
74	DK1314	End Cap For DK Table Fence	2
83	DB5253	1/4-20 x 2-1/2 Phil. Pan HD Bolt	1
84	FT4126	1/4-20 Brass Thumb Nut	1
88	DB5220	Double D Round Wire Lockit	4
91	DB5202	Power Cord Assembly	1
96	DB5252	Connecting Rod	1
97	DK1209	Raw DK Series Step Drill Bit	1
98	DB5255	1/4 x 3/4 Clevis Pin	4
99	DB5227	1/4 x 1-1/2 Locking Pin	1
100	DB5214	DB110 Switch - Safety/Starting	2
101	DB5217	Safety Switch Bracket	1
102	DB5203	Motor Assembly	1
103	DB5246	DB Starting Switch Bracket	1
105	DB5219	Wiring Enclosure w/Holes	1
109	DB5055	Handle	1



Revised 5/15/07